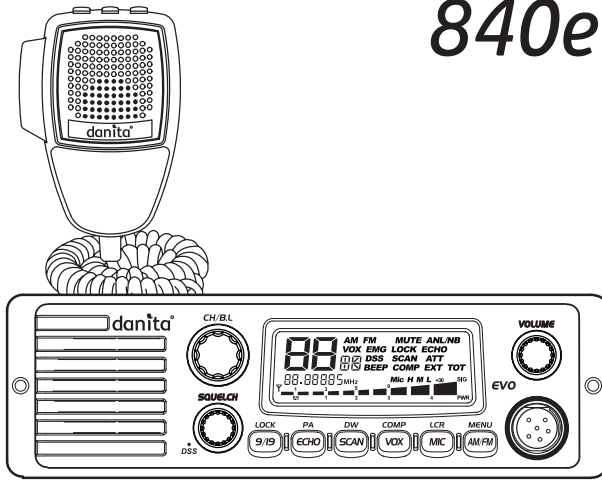


# 4W MOBILE CB TRANSCEIVER 840evo



## INSTRUCTION MANUAL

**danita**  
www.midtkom.dk

P/N 820-C110-D06

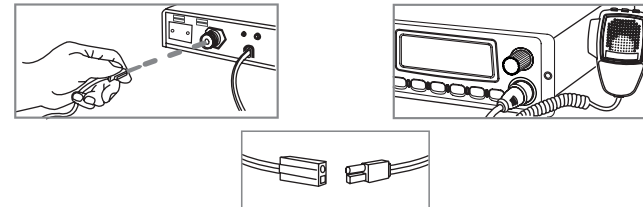
### 1. Supplied Accessories

Your transceiver is supplied with a full range of accessories to help you get started and virtually benefit from all the features straight away.

840evo Transceiver	1 unit
Microphone with cord	1 unit
Power cable	1 unit
Radio mounting bracket	1 unit
Radio mounting thumb screw with rubber washer	2 pieces
Mounting screw with washer (for transceiver bracket)	3 pieces
Mounting screw with washer (for microphone bracket)	2 pieces
Microphone mounting bracket	1 unit
DIN front plate	1 unit
DIN body plate	1 unit

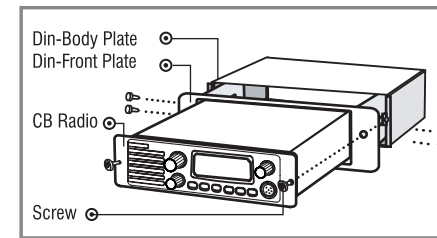
### 2. Installation

#### Normal Installation using Mounting Bracket



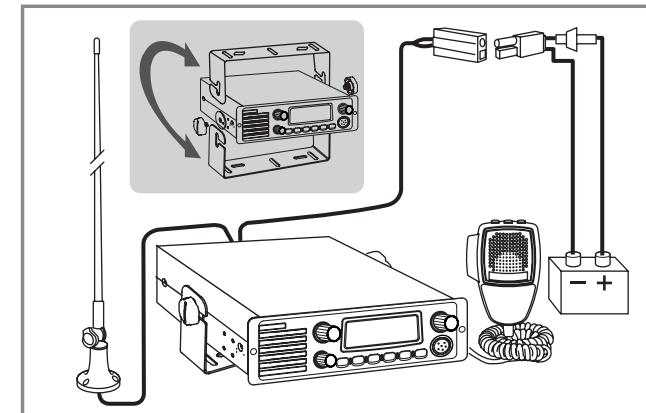
- Put the mounting bracket on the proper location where you are going to install.
- Drill holes and fix mounting bracket on the location.
- Connect the antenna cable plug to the standard receptacle on the transceiver, which is marked "ANT".
- Connect the power cable directly to the vehicle battery or fuse box of the car. Be careful to make sure of the polarity of the battery first and connect the cable.  
(Red: Positive Pole(+), Black: Negative Pole(-)). The same colors are shown on the battery and in the fuse box of the car.)
- Connect the power cable to the transceiver cable.
- Mount the microphone bracket on one side of the transceiver, or near it using two screws included.
- Connect the microphone to the transceiver's microphone receptacle. Now you are ready to operate the transceiver.

#### Installing into Audio Compartment



- Install the Din-Body plate into the audio compartment (center fascia) of your vehicle. (Use the ready made locking flaps.)
- Set the transceiver in the Din-Front plate, and insert the transceiver in the Din-Body plate.
- Fix the screws through the transceiver, Din-Front plate and Din-Body plate.

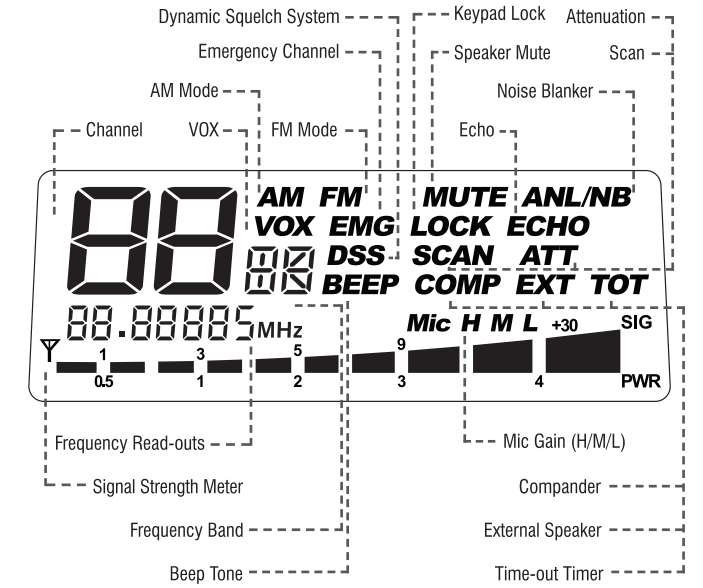
#### Installing an Antenna



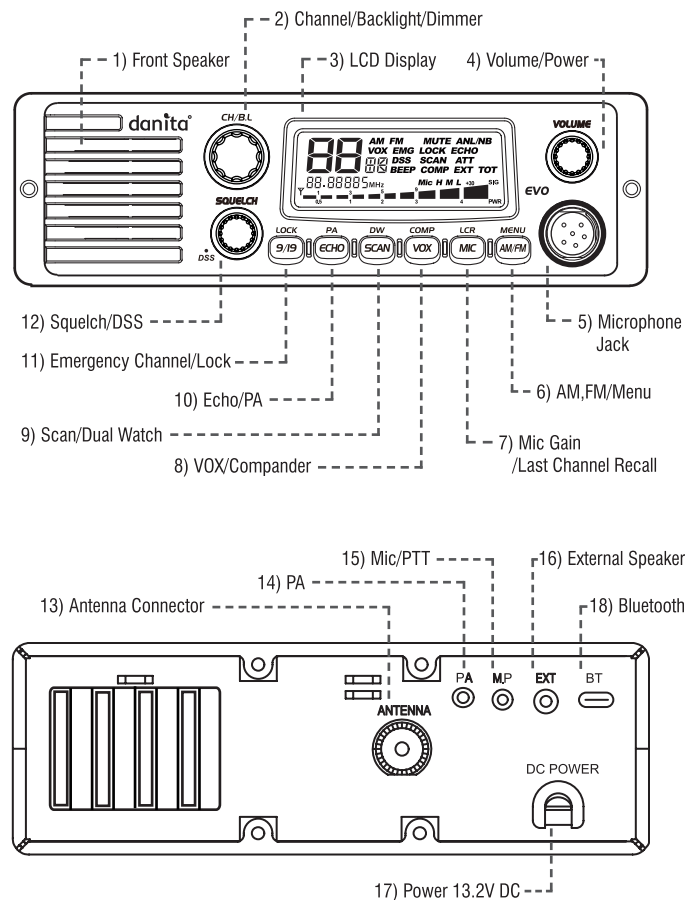
- Place the antenna as high as possible.
- The longer the antenna is, normally the better is the performance of the transceiver.
- Try to mount the antenna in the centre of the surface that you select.
- Make sure that you have a solid metal-to-metal ground connection.
- Be careful not to damage the cable during the installation.

**Warning :** Never try the operation of your transceiver before connecting a proper antenna in order not to cause any damage.

### 3. LCD Display



### 4. Transceiver Controls and Functions



- Front Speaker
- Channel / Backlighting / Dimmer Selector  
Turn right or left, and this allows you to select the channel one by one. Momentary press this selector, and the channel display will blink. Then turn right or left, which allow you to change the backlight color. The second press will lead you to dimmer change mode.
- LCD Display
- Volume / Power Knob
- Microphone Jack
- AM / FM / Menu Button  
Short press to change AM / FM.  
Long press to access Menu mode. Use the Channel/Backlight knob to select the setting. On the Microphone, press center key (VOX button) to access Menu mode. Use Up/Down key to select the setting.

<MENU>

Display	Functions	Settings
bn	Band Selection	See next band chart
bt	Bluetooth Selection	On, Off
nb	Noise Blanker	On, Off
bp	Beep Tone	On, Off
to	Time-out Timer	1-99 sec., Off
At	Attenuation	On, Off

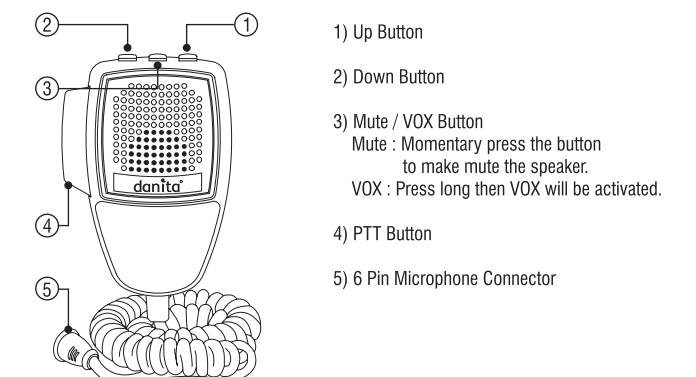
#### <BAND Chart>

Setting	Display	Settings
EC	EC	Europe 40ch. FM 4W
EU	EU	Europe 40ch. AM/FM 4W
D	d	Germany 80ch. FM 4W, 40ch. AM 4W
I2	i2	Italy 34ch. AM/FM 4W
I	i	Italy 40ch. AM/FM 4W
UE(EU/UK)	UE	UK 40ch. FM 4W (British Frequencies) + CEPT 40ch. FM 4W(EC)
UK	UH	UK 40ch. FM 4W (British Frequencies)
PL	PL	Poland 40ch. AM/FM 4W (Polish Frequencies : 5KHz)
F	F	France 40ch. FM 4W, 40ch AM 4W
E	E	Spain 40ch. AM/FM 4W

- Mic Gain / LCR Button  
Short press to change the Mic Gain level to high (H), mid (M) and low (L) with the display indication. Long press to go to the Last Channel you have used.
- VOX / Compander Button  
Short press to activate the VOX. Using the Mic gain the sensitivity can be adjusted. Long press to activate the embedded Compander function.
- Scan / Dual Watch Button  
Short press to activate Scan function.  
Long press to activate Dual Watch function. The current channel is the home channel and the secondary channel can be selected by the channel selection knob. The display blinks DW icon.
- Echo / PA Button  
Short press to activate Echo voice.  
Long press to use PA system. Please check your PA speaker is connected. (option)

- 9/19 / Lock Button  
Short press to go to the emergency channel (9 or 19).  
Long press to lock keypad. The volume, squelch and 9/19 buttons are still working.
- Squelch / DSS Knob  
Manual Adjustment : Turn this knob counter-clockwise until you hear the background noise and then turn the knob a little clockwise until the noise disappears. In this way, you get the best receive sensitivity.  
DSS : In FM mode turn the knob counter-clockwise until you hear the click. The squelch level of your transceiver is dynamically adjusted.
- Antenna Connector
- PA Jack
- Mic & PTT Jack
- External Speaker Jack
- Power 13.2V DC
- Bluetooth Dongle Connection

### 5. Microphone



## 6. How to operate the Transceiver

- 1) Make sure the microphone is connected to the microphone jack.
- 2) Make sure the power cable is connected properly.
- 3) Make sure the antenna is connected to the antenna receptacle.
- 4) It is better to put the squelch control knob turned fully counter-clockwise.
- 5) Turn on the transceiver and control the volume level.
- 6) Adjust the squelch control knob to the optimum level.
- 7) Select your desired channel.
- 8) To transmit, press the PTT button and speak to the microphone.
- 9) Release the PTT button to receive.

## 7. Trouble shooting

If you experience problems with your 840evo transceiver, first check the power supply source. Poor connection of the power supply source can cause problems such as no transmission, no reception or poor reception, and weak or no sound. Ensure that the microphone and antenna are also well connected.

If this does not solve the problem, reset your transceiver as follows.

- 1) Switch off the transceiver.
- 2) Pressing "9/19" button and turn on the transceiver.

This will reset the transceiver, so all the memories are erased and the parameters return to the initial factory setting. This should fix most problems.

In case of further difficulty, please consult your dealer or visit our website.

## 8. CE Declaration



CE versions of the 840evo which display the CE symbol on the product label, Comply with the essential requirements of the Radio Equipment Directive (RED) 2014/53/EU.  
This warning symbol indicates that this equipment operates in non-harmonized frequency bands and/or maybe subject to licensing conditions in the country of use.  
Be sure to check that you have the correct version of this radio or the correct programming of this radio, to comply with your national licensing requirements.

This unit can be used without license and charges in; Austria, Belgium, Bulgaria, Cyprus, Czech, Denmark, Estonia, Finland, France, Germany, Greece, Hungary, Iceland, Ireland, Italy, Latvia, Lithuania, Luxembourg, Malta, Netherlands, Norway, Poland, Portugal, Romania, Slovakia, Slovenia, Spain, Sweden, Switzerland, and U.K.

## 9. Safety Requirement

The power cable is for 13.2 / 24V DC only. Be sure the transceiver is off before connection the leads of the power cable to the power supply. It is important to observe the polarity even if the unit is protected against the accidental inversion :

- \* Red : Positive pole (+)
- \* Black : Negative pole (-)

The same colors are present on the battery and in the fuse box of the car. The unit must be wired for the negative ground only. To avoid damage, do not operate your CB radio without connecting a proper antenna

## 10. Specifications

GENERAL	Channel	40 (See the frequency band chart)	
	Frequency Range	26.56 MHz ~ 28 MHz	
	Operating mode	F3E (FM), A3E (AM)	
	Frequency Control	PLL Synthesizer	
	Frequency Tolerance	0.002%	
	Operating Temperature Range	-10 to +55 °C	
	Microphone	Plug-in Type	
	Input Voltage	13.2 / 24V DC ± 15%	
	Size	190 (W) x 175 (L) x 58 (H)	
	Weight	892.7 g	
TRANSMITTER	Antenna Connector	SO-239 type	
	Power Output	Duty cycle 10% 4 Watts @ 13.8V DC	
	Modulation	AM: from 85% to 95% FM: 1.8KHz ± 0.2KHz	
	Frequency Response	300Hz to 3000Hz	
	Output Impedance	50ohms, Unbalanced	
	Harmonic Suppression	Less than -36dBm	
	Current Drain	AM Full Mod. 1.6A Max.	
	RECEIVER	Receiving System	Dual conversion superheterodyne
		IF Frequencies	Double conversion 1st 10.695MHz/2nd 455KHz
		Sensitivity	0.7µV for 10dB(S+N)/N in AM Mode 0.7µV for 20dB SINAD in FM Mode
Audio Output Power		2W @ 8ohm	
Audio Distortion		Less than 8% @ 1KHz	
Image Rejection		More than 60dB	
Adjacent Channel Rejection		More than 60dB	
Conducted Spurious		Less than -57dBm	
Frequency Response		300Hz to 2500Hz	
Built-in Speaker		8+ + + ohms, Round	
Squelch	Adjustable; Threshold less than 1µV DSS; Less than 2µV		

\* Specification is subject to change without prior notice.

## 11. Restrictions on the use

Country	Band	Use restrictions and other comments
BELGIUM SWITZERLAND	EU F EC	40 Ch - 4W FM - Individual licence is required 40 Ch - 4W AM - Individual licence is required
DENMARK,NORWAY LUXEMBOURG,CZECH	EC	40 Ch - 4W FM - Free use
FINLAND,PORTUGAL FRANCE,NETHERLANDS	EU F EC	40 Ch - 4W FM - Free use 40 Ch - 4W AM - Free use
GERMANY	D EU D2 EC	80 Ch - 4W FM - Individual licence is required 40 Ch - 4W AM - Individual licence is required 40 Ch - 4W AM - Use ch 4-15 only 40 Ch - 4W FM - Free use 12 Ch - 4W AM - Individual licence is required fx Allowed: from 26.960 to 27.410 MHz "BAPT 222 ZV 104"
GREECE	E EU F I EC	40 Ch - 4W FM - Free use 40 Ch - 4W AM - Free use T/R 20-02
IRELAND	E EU F I EC	40 Ch - 4W FM - Free use 40 Ch - 4W AM - Free use S.I. No 436 of 1998. WIRELESS TELEGRAPHY ACT, 1926 (SECTIONS) (EXEMPTION OF CITIZENS' BAND (CB) RADIOS) ORDER, 1998
ITALY	E EU F I EC I2	40 Ch - 4W FM - General authorization is required 40 Ch - 4W AM - General authorization is required 34 Ch - 4W FM 34 Ch - 4W AM(ERP) *AM mode allowed on ch1-23 only PNF issued on DM 08.07.02 NOTES 49 A-B-C-D-E-G
SPAIN	E EU F EC	40 Ch - 4W FM - Individual licence is required 40 Ch - 4W FM - Individual licence is required Art. 57 - Law 11/1998 dated 24th April
SWEDEN	EU F EC	40 Ch - 4W FM - Free use 40 Ch - 4W AM - Individual licence is required
UK	UK EU EC	40 Ch - 4W FM - Free use 40 Ch - 4W AM - Free use
POLAND	PL EU EC	40 Ch - 4W FM / AM - Free use

### << Declaration of Conformity >>

We, TTI Tech Co., Ltd. (#1312 361 Simindaero Dongan-gu Anyang-si Gyeonggi-do Korea) declare on our sole responsibility that this equipment complies with the essential requirements of the Radio Equipment Directive (RED) 2014/53/EU, and that any applicable Essential Test Suite measurements have been performed.

Kind of equipment : MOBILE CB TRANSCEIVER

Type-designation : 840evo

Version (where applicable) :

This compliance is based on conformity with the following standards, specifications or documents :

EN 62311:2008	
EN 300 433	V2.1.1
EN 301 489-1	V2.2.0
EN 301 489-13	V1.2.1
EN 60950-1:2006+A11:2009	+A1:2010+A12:2011+A2:2013



N. Y. Kim  
Director

Korea, Sept. 10, 2021

Signature

### << Declaration of Identical Product >>

We, TTI Tech Co., Ltd. (#1312 361 Simindaero Dongan-gu Anyang-si Gyeonggi-do Korea) declare that we are the original manufacturer of the CB transceiver brand TTI and model TCB-1100, and we hereby declare that it is totally identical electronically and mechanically to the CB transceiver brand "Danita" and model "840evo".

The mentioned two CB transceiver are different only by their brand name and model name marking for their commercial reasons only.

N. Y. Kim  
Director

Korea, Sept. 10, 2021

Signature