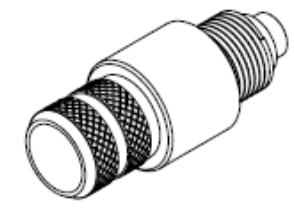
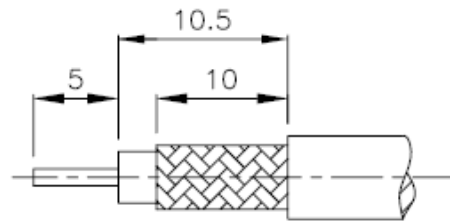
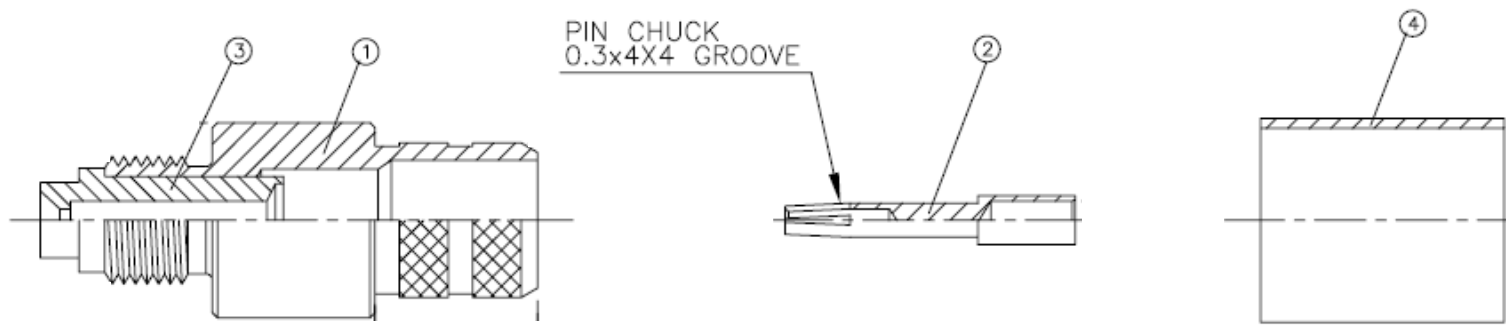


NO	DESCRIPTION	MATERIAL	Q'TY	FINISH	REMAEK
1	BODY	BRASS	1	NICKEL	B-FME0631-N
2	PIN	BRASS	1	GOLD	P-FME0413-G
3	INSULATION	DELRIN	1	DELRIN	I-0087D
4	RING 1	BRASS	1	NICKEL	R-0010-N
5	RING 2	BRASS	1	NICKEL	R-0057-N



(Recommended Stripping Dimension)



[www.midtkom.dk](http://www.midtkom.dk)

FME female crimp RG213 & RG214

Part nr. 40180

DRAWN	MARY	DATE	92.11.07
CHECKED	黃巧君	DATE	92.11.07
Q.A.	蘇姿潔	DATE	
APPROVAL	徐燦霖	DATE	
REVISION		DATE	

DIMENSIONS ARE IN MILLIMETERS			
UNLESS OTHERWISE SPECIFIED TOLERANCE			
0.5-5=±0.2	120-315=±1		
5-30=±0.4	315-1000=±1.6		
30-120=±0.6	1000-2000=±2.4		
SCALE	4:1	SIZE	A

REVISION	
DESCRIPTION	ENGINEER